

SUPPLEMENT INFORMATION

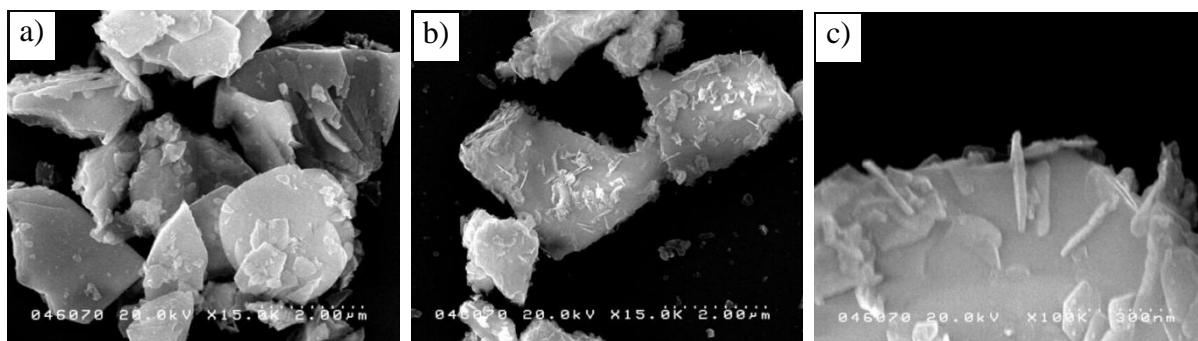


Figure S1 SEM images of bismuth oxide prepared using urea before calcination with the magnification of 15 K (a) and after calcination with the magnification of (b) 15K and (c) 100K

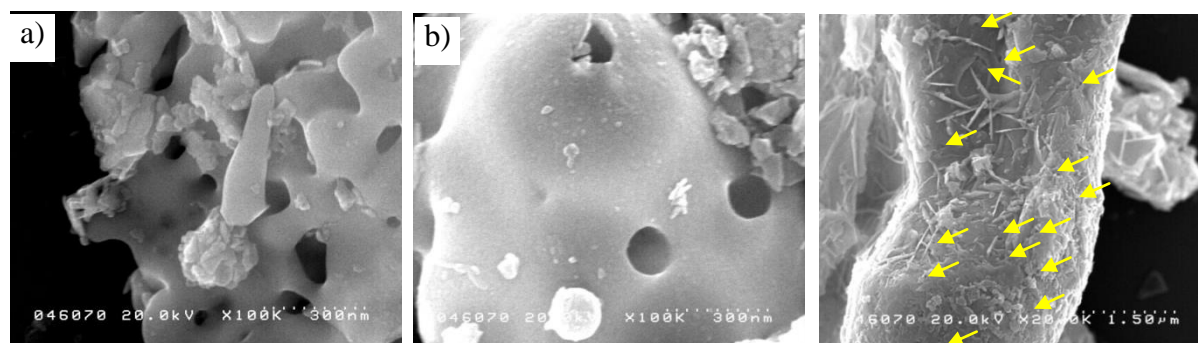


Figure S2 SEM images of bismuth oxide prepared using glycine before calcination with the magnification of 100 K (a, b) and after calcination with the magnification of (c) 20K

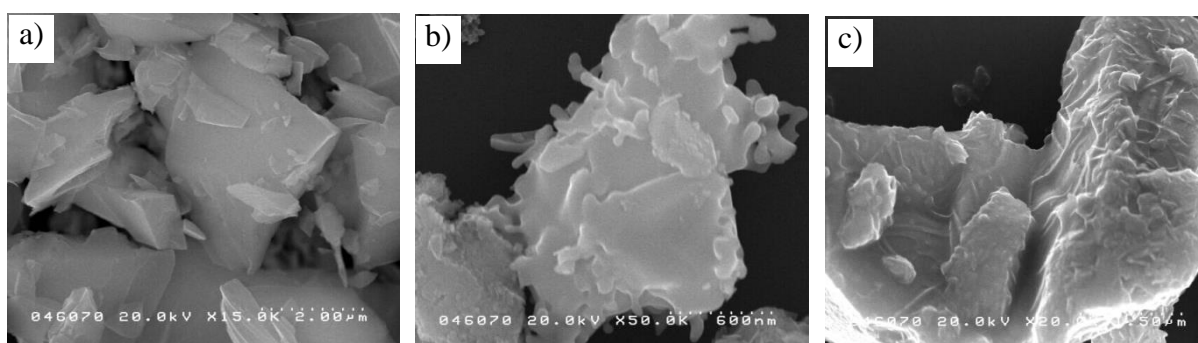


Figure S3 SEM images of bismuth oxide prepared using citric acid before calcination with the magnification of (a) 15, (b) 50K and after calcination with the magnification of (c) 20K